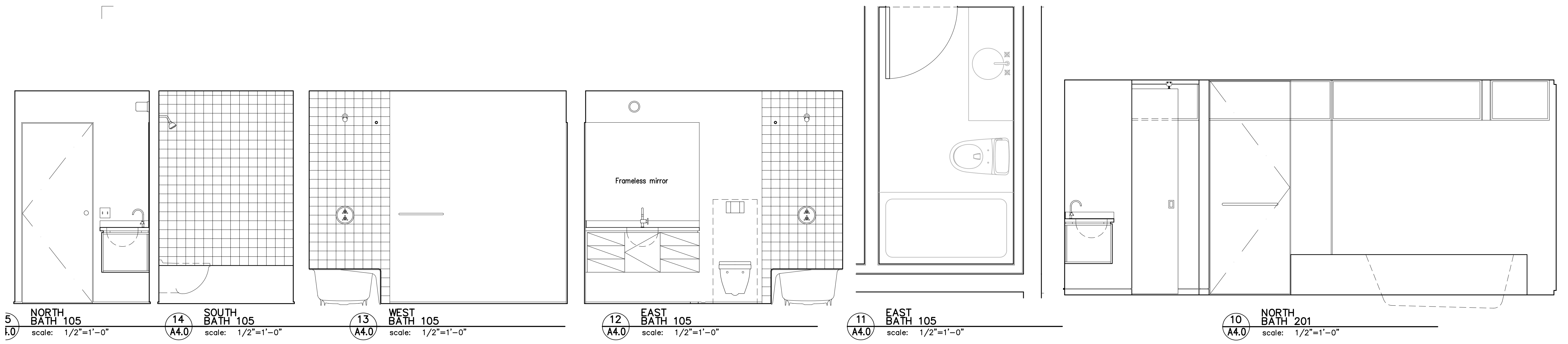


ISSUES		
No.	Description	Date
1.	Design	12/12/05
2.	Pre-Application	01/03/06
3.	Permit	01/25/06



5 NORTH BATH 105
scale: 1/2"=1'-0"

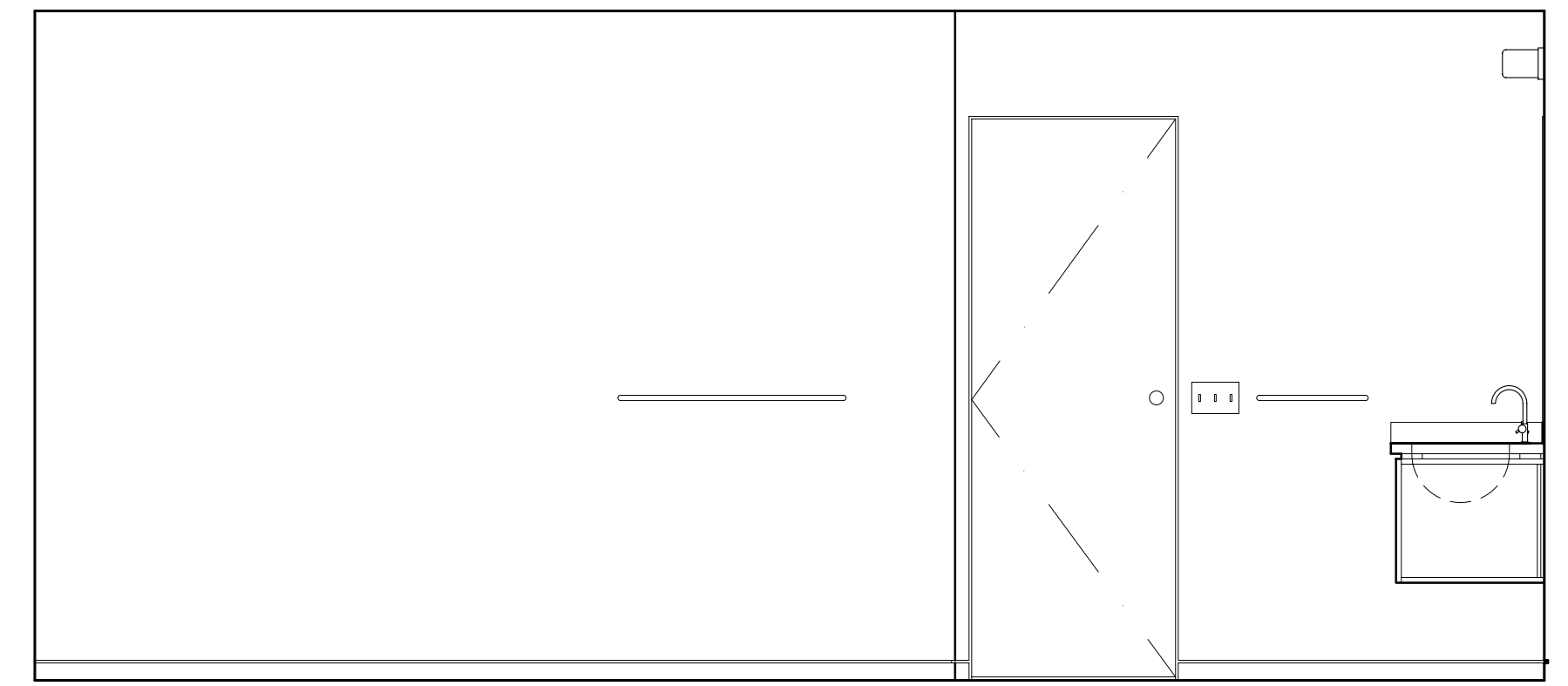
14 SOUTH BATH 105
scale: 1/2"=1'-0"

13 WEST BATH 105
scale: 1/2"=1'-0"

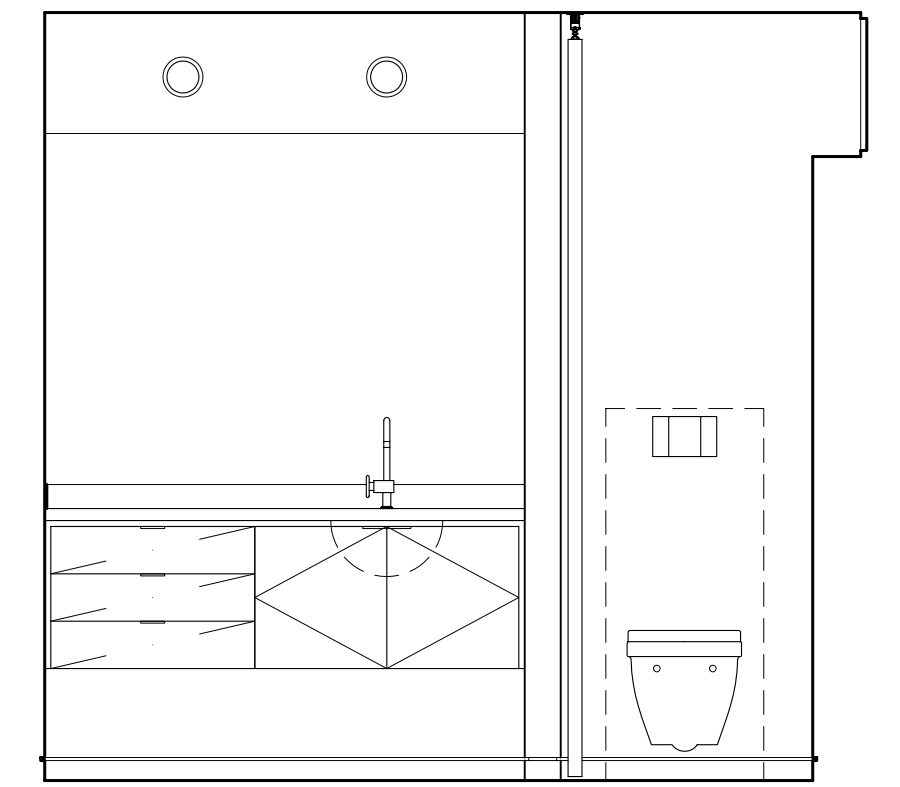
12 EAST BATH 105
scale: 1/2"=1'-0"

11 EAST BATH 105
scale: 1/2"=1'-0"

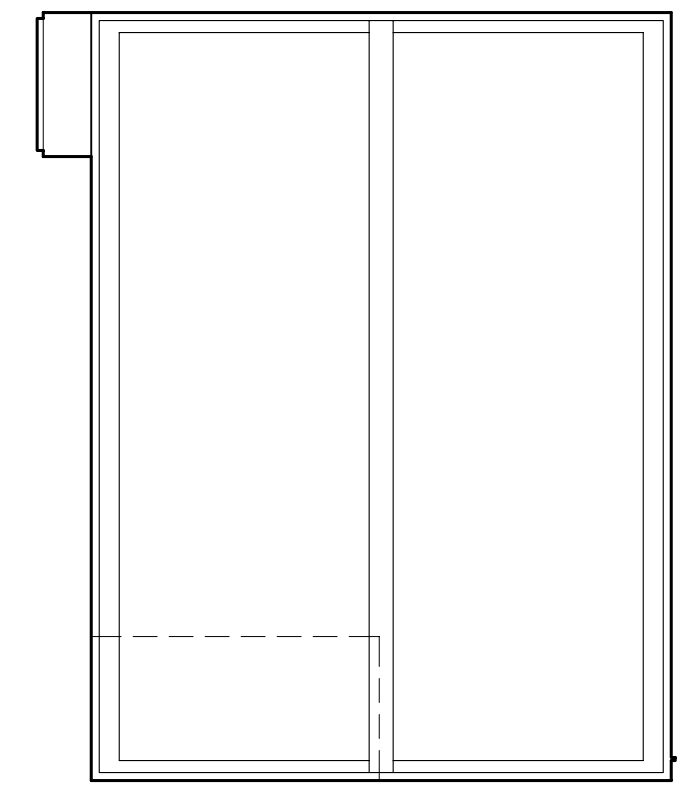
10 NORTH BATH 201
scale: 1/2"=1'-0"



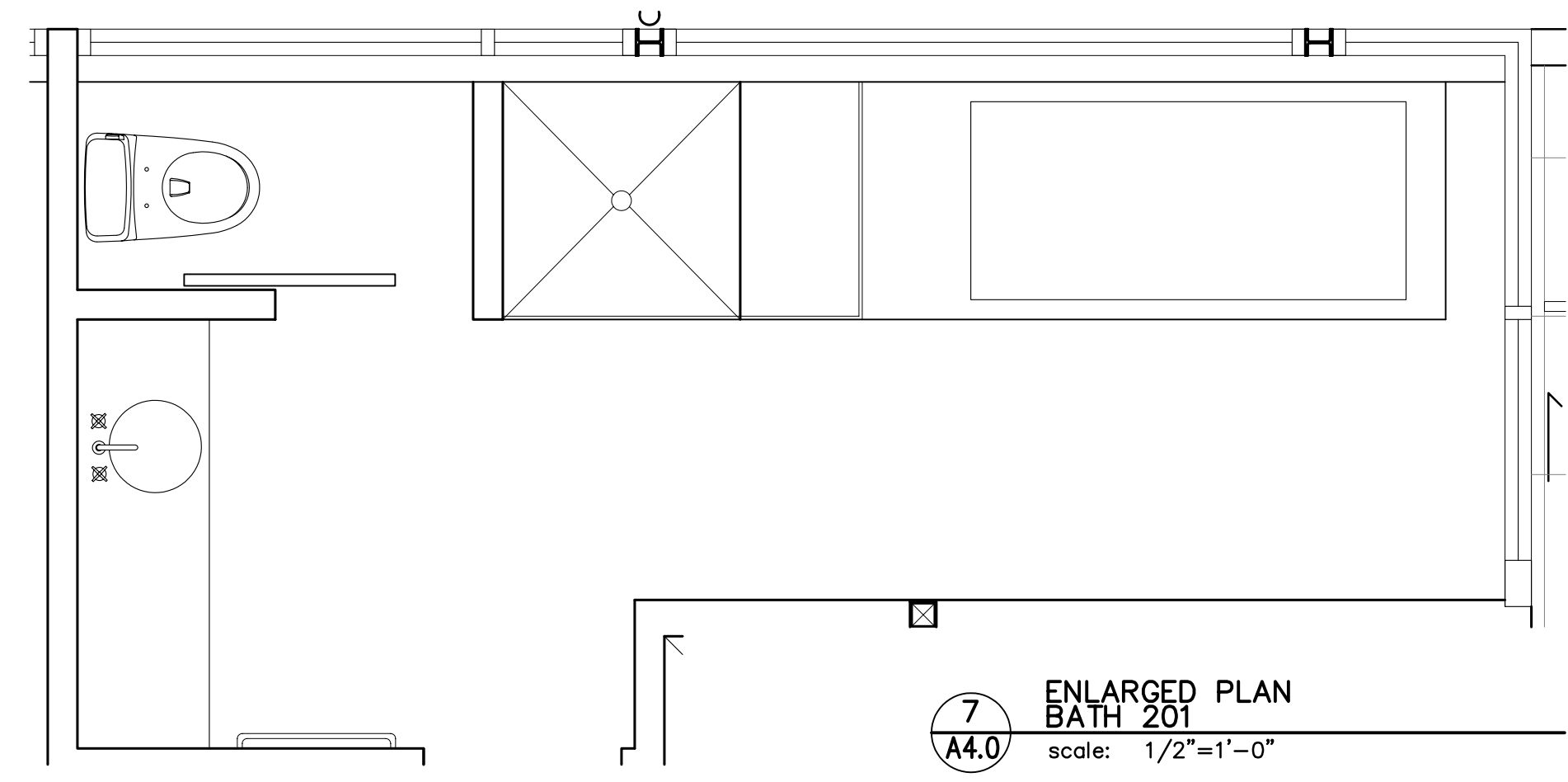
9 SOUTH BATH 201
scale: 1/2"=1'-0"



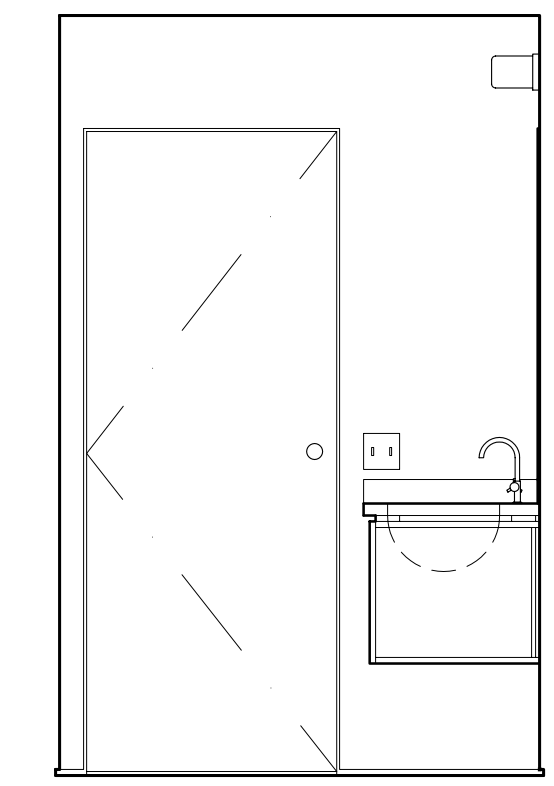
8 WEST BATH 201
scale: 1/2"=1'-0"



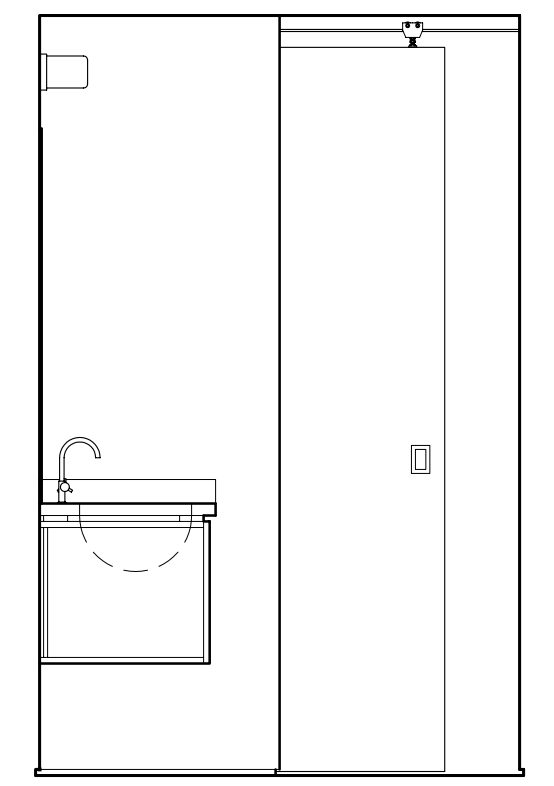
7 EAST BATH 201
scale: 1/2"=1'-0"



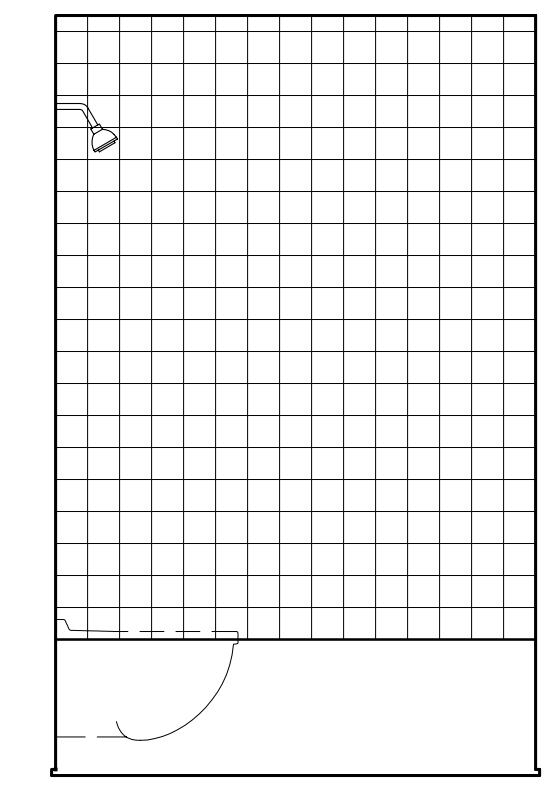
7 ENLARGED PLAN BATH 201
scale: 1/2"=1'-0"



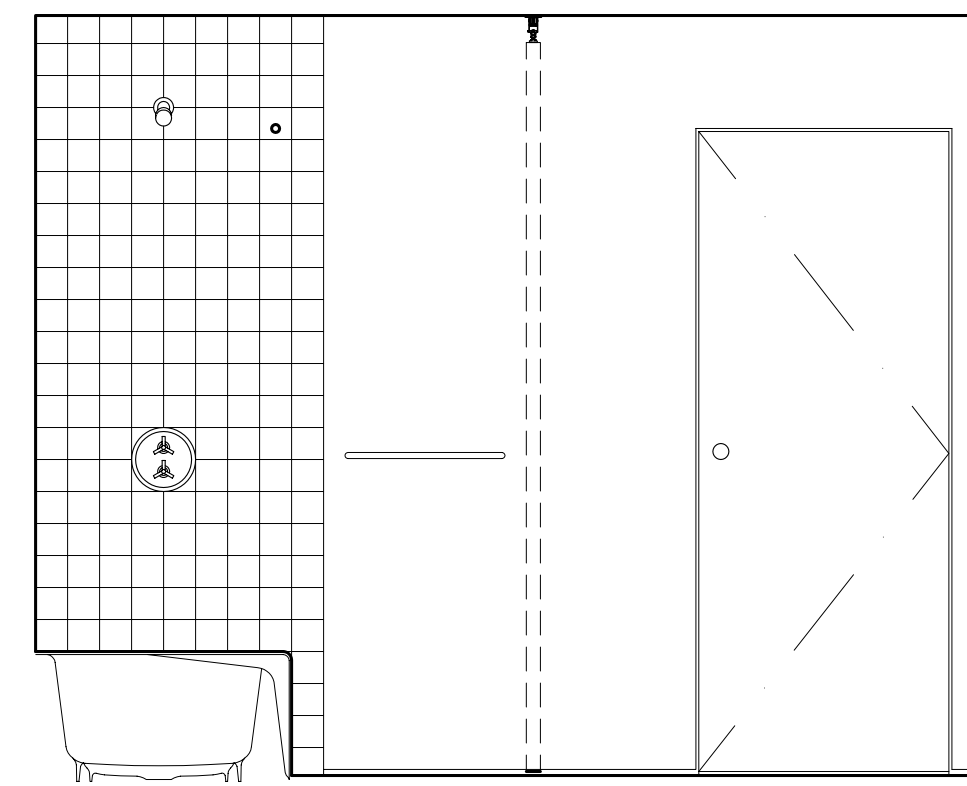
6 NORTH BATH 105
scale: 1/2"=1'-0"



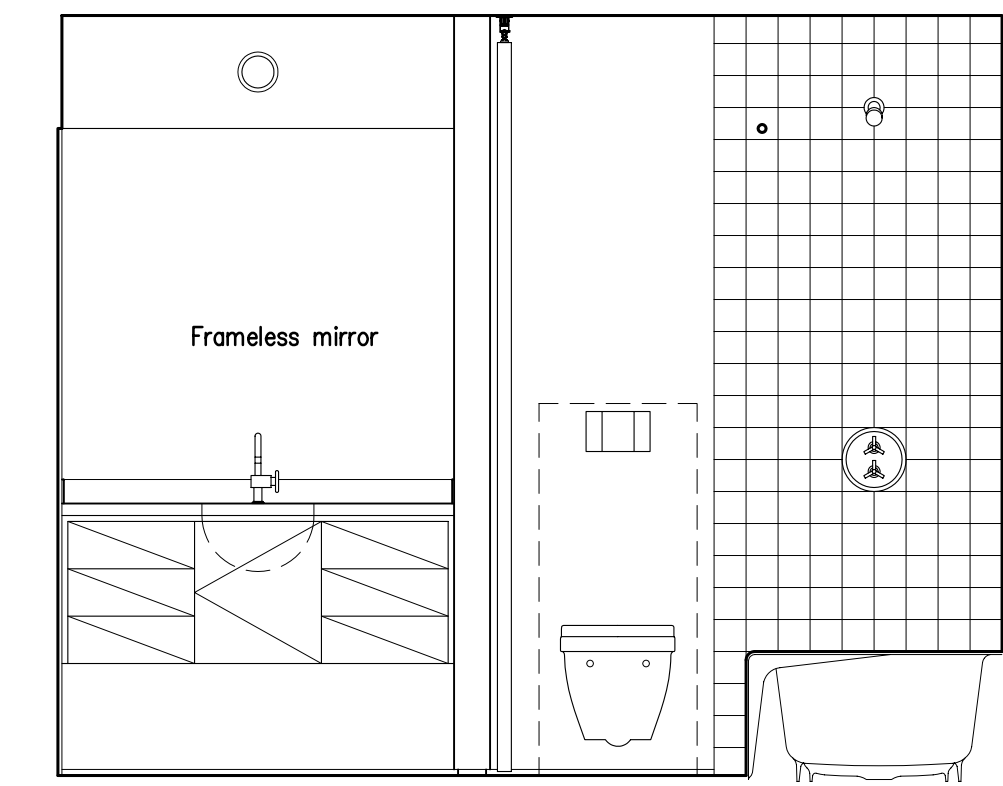
5 NORTH BATH 105
scale: 1/2"=1'-0"



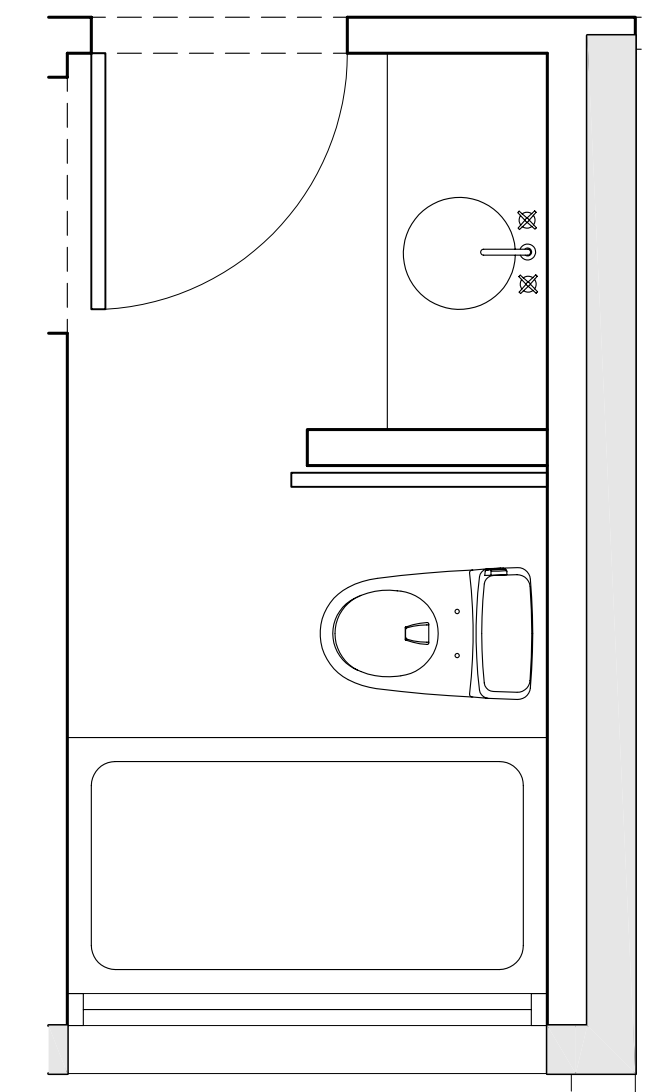
4 SOUTH BATH 105
scale: 1/2"=1'-0"



3 WEST BATH 105
scale: 1/2"=1'-0"



2 EAST BATH 105
scale: 1/2"=1'-0"



1 ENLARGED PLAN BATH 105
scale: 1/2"=1'-0"

REVISIONS		
No.	Description	Date

NOT FOR CONSTRUCTION

7035 REGISTERED ARCHITECT
ERIC JAN COBB
STATE OF WASHINGTON

Casa Nueva
315 25th Ave E
Seattle, Washington

INTERIOR ELEVATIONS	
SCALE:	A4.0
JOB NO. 2514Gruder	
DATE 07/12/05	

E. Cobb Architects Inc.
911 Western Ave #318 Seattle, WA 98104

DO NOT SCALE DRAWINGS
INCHES AT FULL SCALE REPRODUCTION